

EASEMENT NOTES

- 1 INDICATES A 20' GENERAL UTILITY AND ACCESS EASEMENT.
- 2 INDICATES A 7.5' LANDSCAPE EASEMENT.
- 3 INDICATES A SITE VISIBILITY EASEMENT.

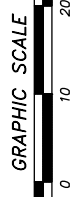
UTILITY NOTES

- 1 EXISTING 18" R.C.P. STORM DRAIN PER DWG. _____
- 2 PROPOSED 2" RECLAIMED WATER SERVICE AND 1 1/2" METER PER DWG. NO. 20035-16.
- 3 EXISTING 8" P.V.C. SEWER PER DWG. NO. 06035-08 AND 10.
- 4 EXISTING 8" P.V.C. SEWER PER DWG. NO. 06033-05.
- 5 EXISTING 12" P.V.C. WATER PER DWG. NO. 06033-05.
- 6 EXISTING RECLAIMED WATER PER DWG. NO. 06033-5.
- 7 EXISTING 8" P.V.C. WATER PER DWG. NO. 14031-11 AND 12.
- 8 CONNECT TO EXISTING 6" WATER STUB.
- 9 CONNECT TO EXISTING 8" WATER STUB.
- 10 PROPOSED 6" WATER (PVT.).
- 11 PROPOSED 12"x8" MET TAP FOR WATER.
- 12 PROPOSED 8" SEWER (PVT.).
- 13 PROPOSED 8" FIRE (PVT.).
- 14 PROPOSED 12"x8" MET TAP FOR FIRE.
- 15 PROPOSED 12" STORM DRAIN (PVT.).
- 16 EXISTING 8" RECLAIMED WATER PER DWG. NO. 06035-10.
- 17 EXISTING 12" P.V.C. WATER PER DWG. NO. 06035-10.
- 18 EXISTING 16" P.V.C. WATER PER DWG. NO. 06035-10.
- 19 EXISTING 48" H.D.P.E. STORM DRAIN PER DWG. NO. 14024-12 AND 34.
- 20 EXISTING 24" H.D.P.E. STORM DRAIN PER DWG. NO. 14024-12 AND 34.
- 21 EXISTING 8" P.V.C. SEWER PER DWG. NO. 14031-11 AND 12.
- 22 CONNECT TO EXISTING STORM DRAIN.
- 23 CONNECT TO EXISTING SEWER.
- 24 EXISTING 6" P.V.C. RECLAIMED WATER PER DWG. NO. 14031-19.
- 25 EXISTING 12" P.V.C. WATER PER DWG. NO. 14031-19.
- 26 EXISTING 8" P.V.C. SEWER PER DWG. NO. 14031-10.

CONSTRUCTION NOTES

- 1 AREA DRAIN PER ROUGH GRADING PLAN DWG. NO. 20035-4. ADJUST RIM PER PLAN.
- 2 PLUG AND STUB EXISTING STORM DRAIN.
- 3 GATE FOR EXIT ONLY.
- 4 SPECIAL DESIGN WALL PER OTHERS. FINISH AND COLOR PER LANDSCAPE PLANS.
- 5 RETAINING WALL PER CITY OF CHULA VISTA STANDARDS.
- 6 RETAINING WALL WITH RISERS AND HANDRAILS (TYP.), SEE (B).
- 7 ENHANCED PAVING, DESIGN PER LANDSCAPE PLANS.
- 8 EXIST. CATCH BASIN TO BE REPLACED. STORM DRAIN EXTENDED.
- 9 PROPOSED DRAINAGE DITCH.
- 10 6" CURB.
- 11 0" CURB.
- 12 TUBULAR STEEL FENCE PER LANDSCAPE PLANS.
- 13 OVERHEAD CARPORT STRUCTURE BY OTHERS.
- 14 HANDRAILS AND DEEPENED EDGE PER LANDSCAPE PLANS.

NOTE:
* WATERPROOFING REQUIRED ALONG BUILDING AT ALL COURTYARDS.

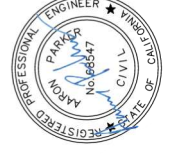


AS BUILT

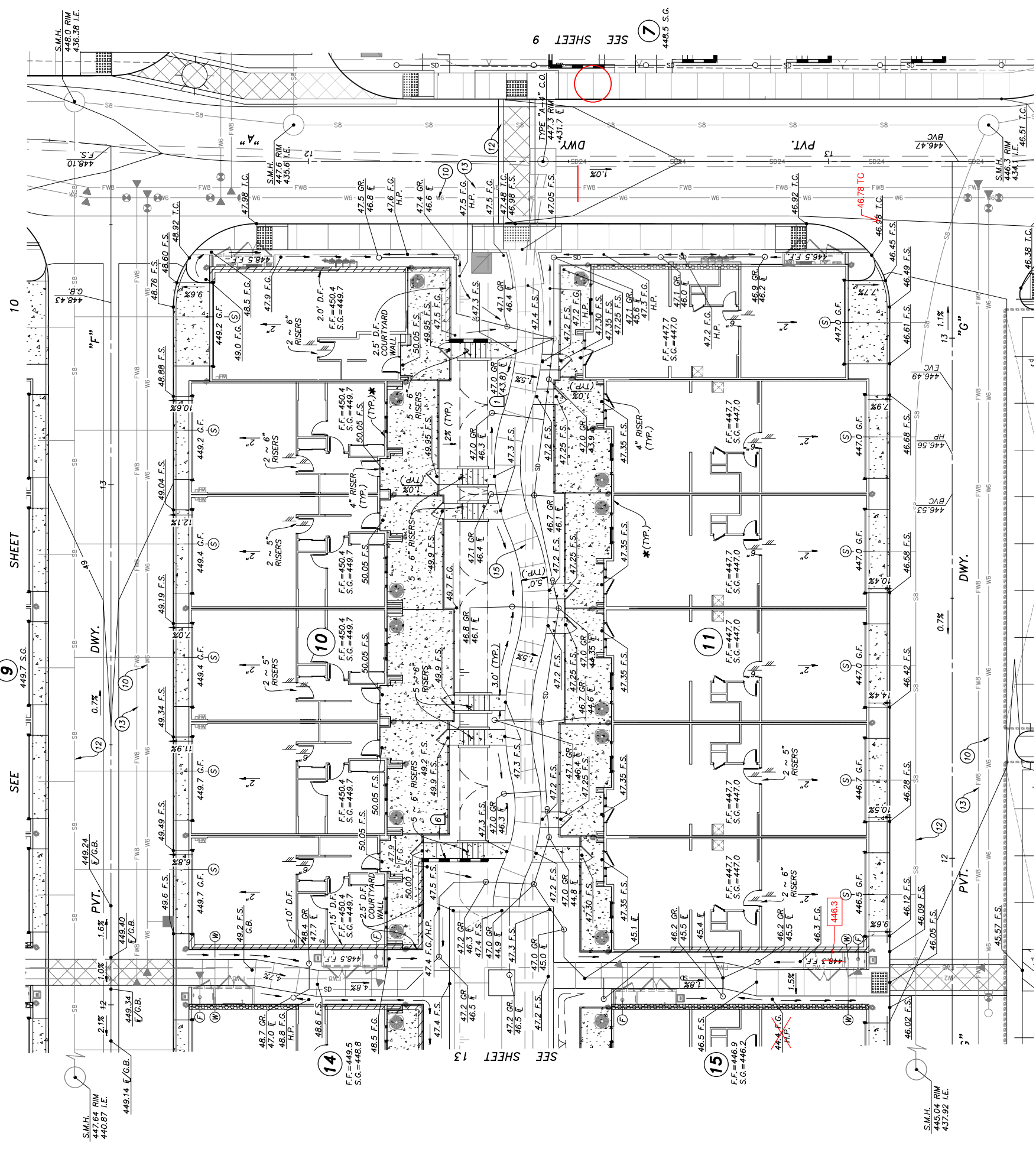
Signature: **AARON PARKER**
 Printed Name: **AARON PARKER**
 My Registration Expires: **9-30-21** Discipline: **CIVIL**

Date: _____
 P.E. No. **68547**

SB&ON
 PLANNING, ENGINEERING & SURVEYING
 3880 Camino Real, Suite 120
 San Diego, CA, 92123
 619-592-1141
 619-592-6157 Fax



CITY OF CHULA VISTA DEVELOPMENT SERVICES DEPARTMENT
 PRECISE GRADING PLANS FOR:
OTAY RANCH VILLAGE 2 R-25(A)
 CITY OF CHULA VISTA TRACT NO. BR20-0131



NOTE:
CONNECT ALL ROOF DRAINS TO NEAREST AREA DRAIN SYSTEM. NO AREA DRAIN. ADD SPLASH BLOCK PER LANDSCAPE PLANS.

NOTE:
UTILITY CABINET AT F.F. ELEVATION U.N.O. ADD 6" DEEPENED EDGE TO CABINET TO ALLOW FOR MINIMAL GRADE DIFFERENCE IN FRONT OF CABINET.

Approved: _____
 By: _____
 For the City Engineer

Submitted: _____
 By: _____
 Planning: _____

Designed By: **J.S. T.P.**
 Plans Prepared Under Supervision Of: **AARON PARKER**
 Date: **3-9-21**
 R.C.E. No. **68547**

SCALE: HORIZONTAL 1" = 10'
 VERTICAL N/A

REVISIONS	Date	App'd
1	8/22/21	

REFERENCES	By
06020, 06033, 06035, 06049, 14024, 14031, 14036, 20035	SB&ON

CONSTRUCTION RECORD
CONTRACTOR: _____
INSPECTOR: _____
DATE COMPLETED: _____

