

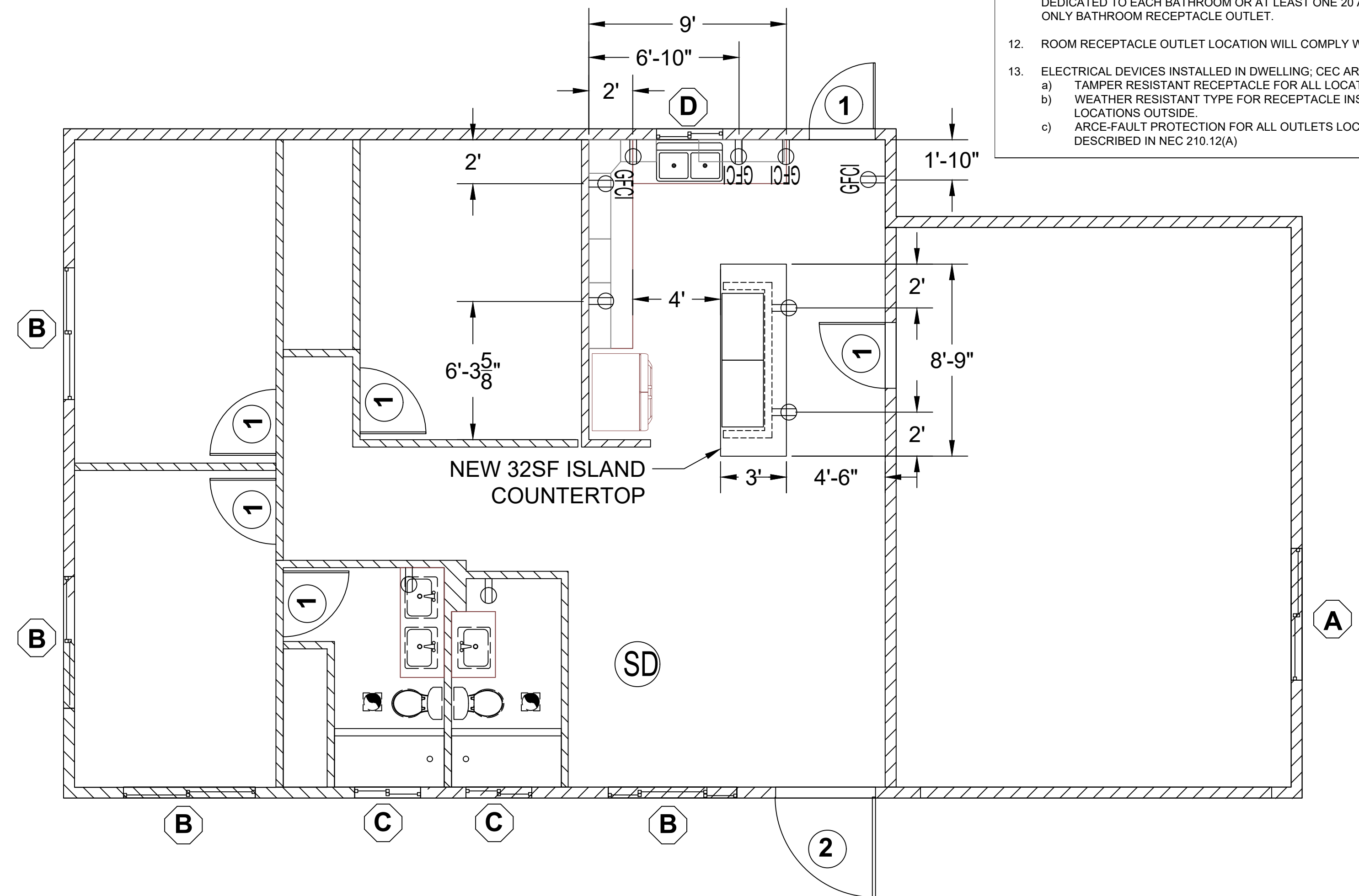
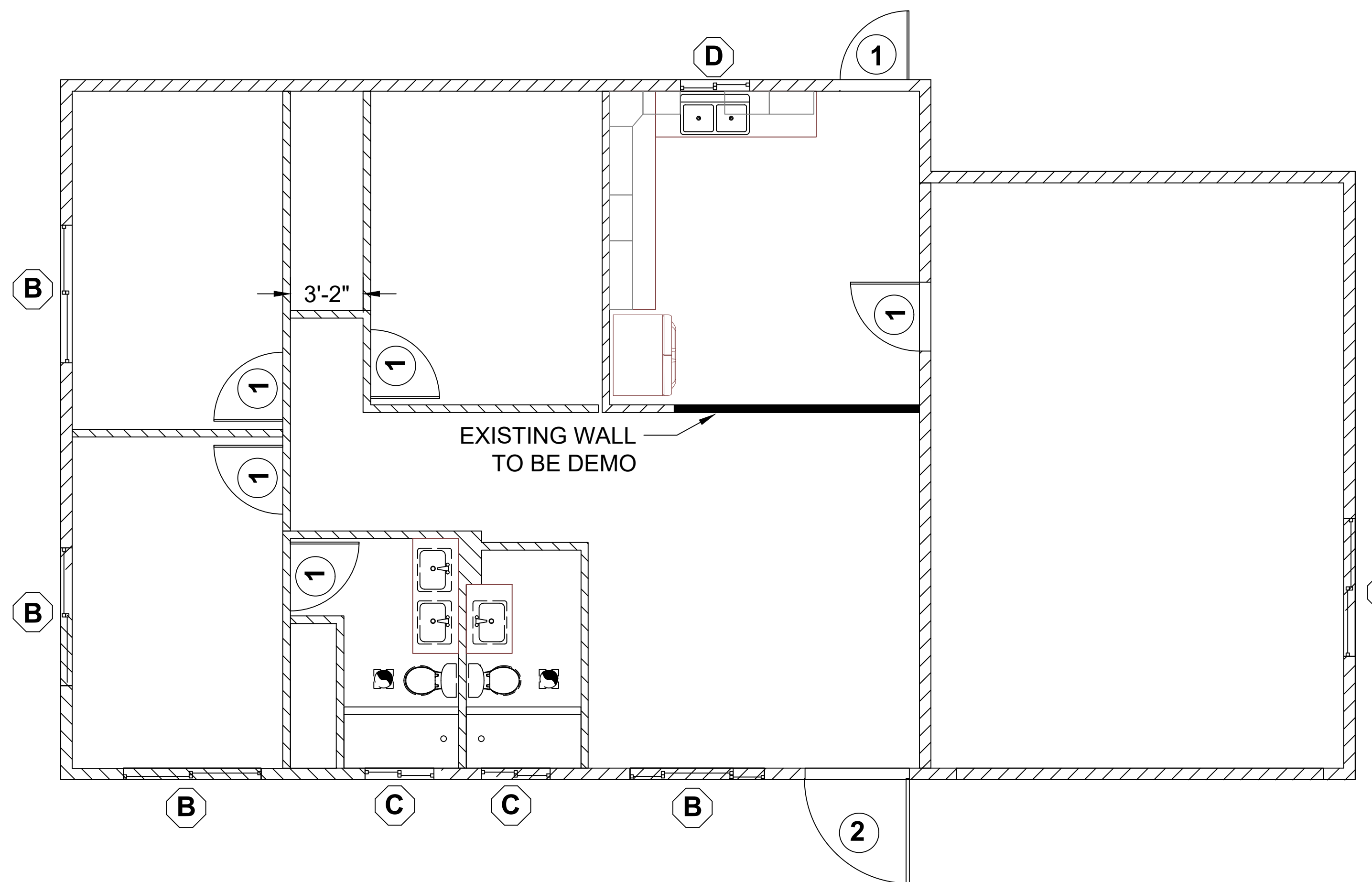
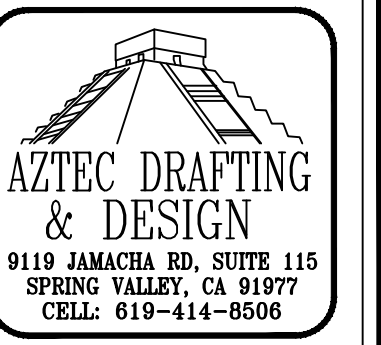


**FLOOR PLAN NOTES**

- EXTERIOR WALLS WITHIN 3 FEET OF PROPERTY LINE (SPRINKLERS) OR 5 FEET OF PROPERTY LINE (WITHOUT SPRINKLERS) REQUIRE 1-HOUR FIRE RATING FOR EXPOSURE TO BOTH SIDES
- PROJECTIONS:
  - PROHIBITED WITHIN 2 FEET OF PROPERTY LINE
  - 1-HOUR FIRE RATING ON THE UNDERSIDE WITHIN 3FT OF PROPERTY LINE (SPRINKLERS)
  - 1-HOUR FIRE RATING ON THE UNDERSIDE WITHIN 5FT OF PROPERTY LINE (WITHOUT SPRINKLERS)
- OPENINGS:
  - PROHIBITED WITHIN 3FT OF PROPERTY LINE
  - MAXIMUM 25% OF WALL AREA WITHIN 5 FEET OF PROPERTY LINE (WITHOUT SPRINKLERS)
- PENETRATIONS:
  - 1-HOUR FIRE-RATED PENETRATIONS OF WALLS WITHIN 3FT OF PROPERTY LINE (SPRINKLERS)
  - 1-HOUR FIRE-RATED PENETRATIONS OF WALLS WITHIN 5FT OF PROPERTY LINE (WITHOUT SPRINKLERS)
- CONCRETE LANDING WITH MIN 36" DEPTH AND A MAXIMUM OF 1-1/2" LOWER THAN TOP OF DOOR THRESHOLD

**ELECTRICAL PLAN NOTES**

- KITCHENS REQUIRE EXHAUST FANS WITH A MINIMUM 100 CFM DUCTED TO THE EXTERIOR. DETAIL COMPLIANCE BY INCLUDING A COMPLYING EXHAUST FAN OR A DUCTED RANGE HOOD TO THE EXTERIOR.
- 3"x3"x0.229" PLATE WASHERS SHALL BE USED ON EACH SILL PLATE ANCHOR BOLT
- FOR STANDARD CUT WASHERS PLACED BETWEEN PLATE WASHER AND NUT, HOLE IN PLATE WASHER MAY BE DIAGONALLY SLOTTED WITH MAXIMUM  $\frac{1}{8}$ " LARGER WIDTH THAN BOLT DIAMETER AND MAXIMUM 1-3/4" SLOT LENGTH
- PROVIDE A MINIMUM OF TWO ANCHOR BOLTS PER SILL PLATE WITH ONE BOLT LOCATED MAXIMUM 12" AND MINIMUM 7 BOLT DIAMETERS FROM EACH END OF EACH SECTION.
- BOLTS LOCATED IN THE MIDDLE THIRD OF THE SILL PLATE WIDTH
- FASTENERS FOR PRESSURE-PRESERVATIVE TREATED AND FIRE RETARDANT TREATED WOOD SHALL BE HOT-DIPPED ZINC COATED GALVANIZED, STAINLESS STEEL OR COPPER
- NO LPG PIPING ASSEMBLIES ALLOWED IN OR BENEATH SLABS WITHIN THE STRUCTURE
- ELECTRICAL RECEPTACLES SHALL BE LISTED TAMPER-RESISTANT. (CEC 406.12)
- AT LEAST ONE 120 VOLT, 20-AMP BRANCH SHALL BE PROVIDED TO SUPPLY BATHROOM RECEPTACLE OUTLETS.
- ARC FAULT CIRCUIT INTERRUPTER PROTECTION FOR ALL OUTLETS.
- CEC ARTICLE 210.11, (c)3 BATHROOM CIRCUITING SHALL BE A 20 AMP CIRCUIT DEDICATED TO EACH BATHROOM OR AT LEAST ONE 20 AMP CIRCUIT SUPPLYING ONLY BATHROOM RECEPTACLE OUTLET.
- ROOM RECEPTACLE OUTLET LOCATION WILL COMPLY WITH CEC 210.52
- ELECTRICAL DEVICES INSTALLED IN DWELLING; CEC ARTICLE 210 & 406
  - TAMPER RESISTANT RECEPTACLE FOR ALL LOCATION PER 210.52
  - WEATHER RESISTANT TYPE FOR RECEPTACLE INSTALLED IN DAMP OR WET LOCATIONS OUTSIDE.
  - ARCE-FAULT PROTECTION FOR ALL OUTLETS LOCATED IN ROOMS, AS DESCRIBED IN NEC 210.12(A)



**EXISTING FLOOR PLAN**  
1/4" = 1'-0"

**NEW FLOOR PLAN**  
1/4" = 1'-0"

**WALL LEGEND**

- 2x6 WALL
- 2x4 WALL
- 2x4 PONY WALL

**ELECTRICAL LEGEND**

- GFCI DUPLEX OUTLET W/ GROUND FAULT INT.
- DUPLEX OUTLET
- EXHAUST FAN (110 CFM)
- CARBON MONOXIDE DETECTOR
- SMOKE DETECTOR

**MARCO PEREDA**  
KITCHEN & BATHROOM REMODEL  
1901 BETA ST, NATIONAL CITY CA 91950  
APN: 562-260-11-00  
UTILITY: SDG&E  
A/E: NATIONAL CITY

**EXISTING & NEW FLOOR PLAN**

REVISION		
0	-	11/02/23
PROJECT NO. P014		
SHEET NO. A-101		